

Terrace Rehabilitation Unit
Program Report Card for
Persons Served
7/06 - 6/09

Acute Rehabilitation Percentage (#) Patient Mix

Diagnostic Category	July - June 07	July - June 08	July - June 09
Stroke	18% (72)	24% (69)	24% (65)
Brain Dysfunction	1% (2)	6% (18)	6% (16)
Amputee	2% (6)	4% (10)	4% (11)
Orthopedics	43% (169)	43% (122)	37% (98)
Cardiac	8% (31)	3% (9)	7% (20)
Debility	4% (14)	9% (27)	9% (24)

The number of acute rehabilitation patients decreased in fiscal year 2009. This was primarily due to the decrease in patients with a diagnosis in the category of orthopedics.

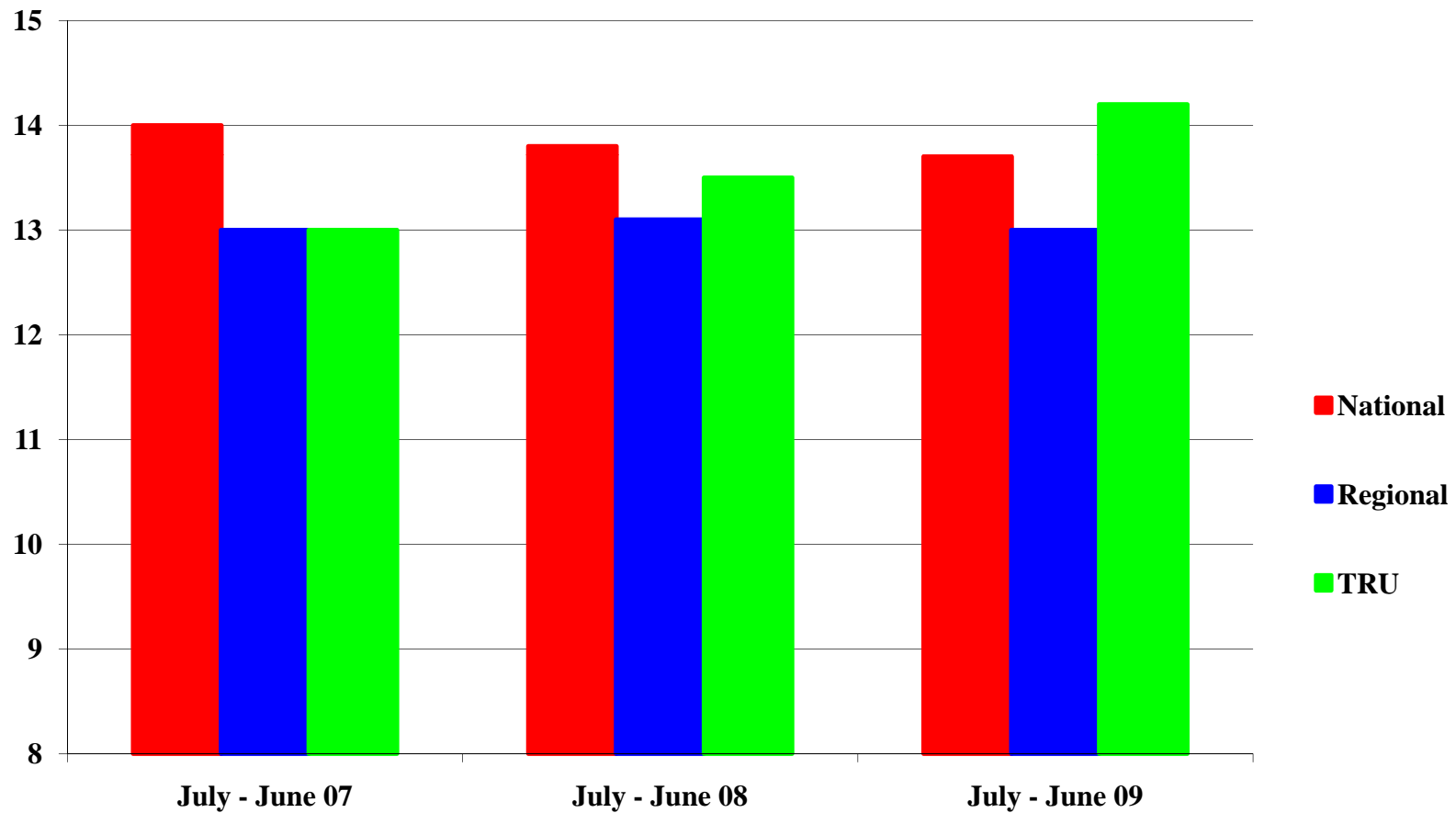
Sub-acute Rehabilitation Percentage (#) Patient Mix

Diagnostic Category	July - June 07	July - June 08	July - June 09
Stroke	6% (10)	5% (8)	5% (7)
Amputee	2% (3)	1% (1)	3% (5)
Orthopedics	24% (37)	26% (46)	27% (40)
Cardiac	10% (15)	6% (10)	16% (23)
Pulmonary	3% (4)	4% (6)	5% (7)
Debility	12% (19)	29% (51)	25% (36)
Medically Complex	40% (61)	21% (37)	12% (17)
Total	(154)	(177)	(146)

The number of sub-acute rehabilitation patients decreased in fiscal year 2009. This was primarily due to a decrease in the number of patients with a diagnosis in the category of debility and medically complex.

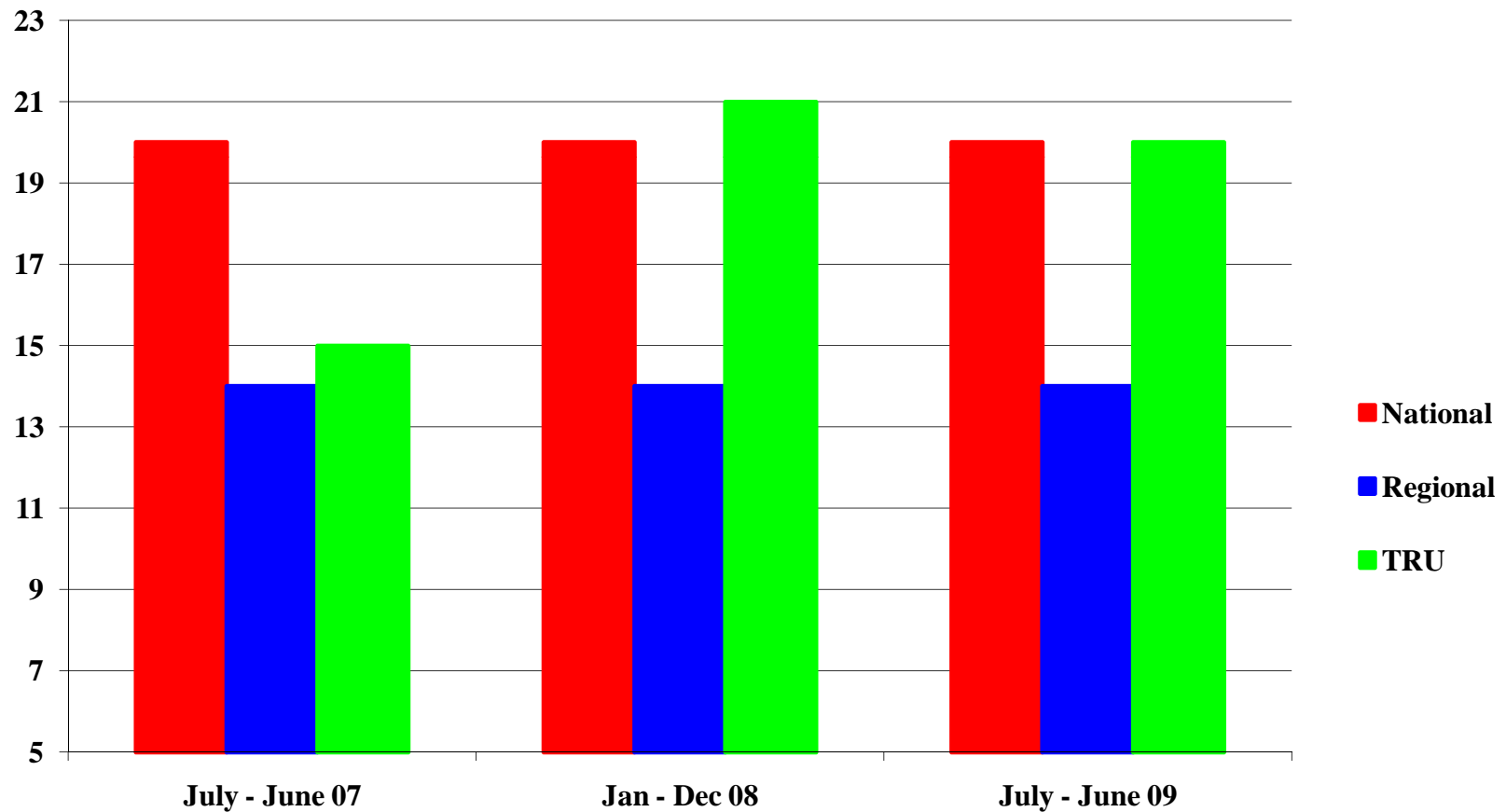
Average Length of Stay (LOS) Acute Rehabilitation

In fiscal year 2009 the acute rehabilitation average length of stay was 14.2 days. This is 1.2 days greater than the region and a half-day greater than the nation.



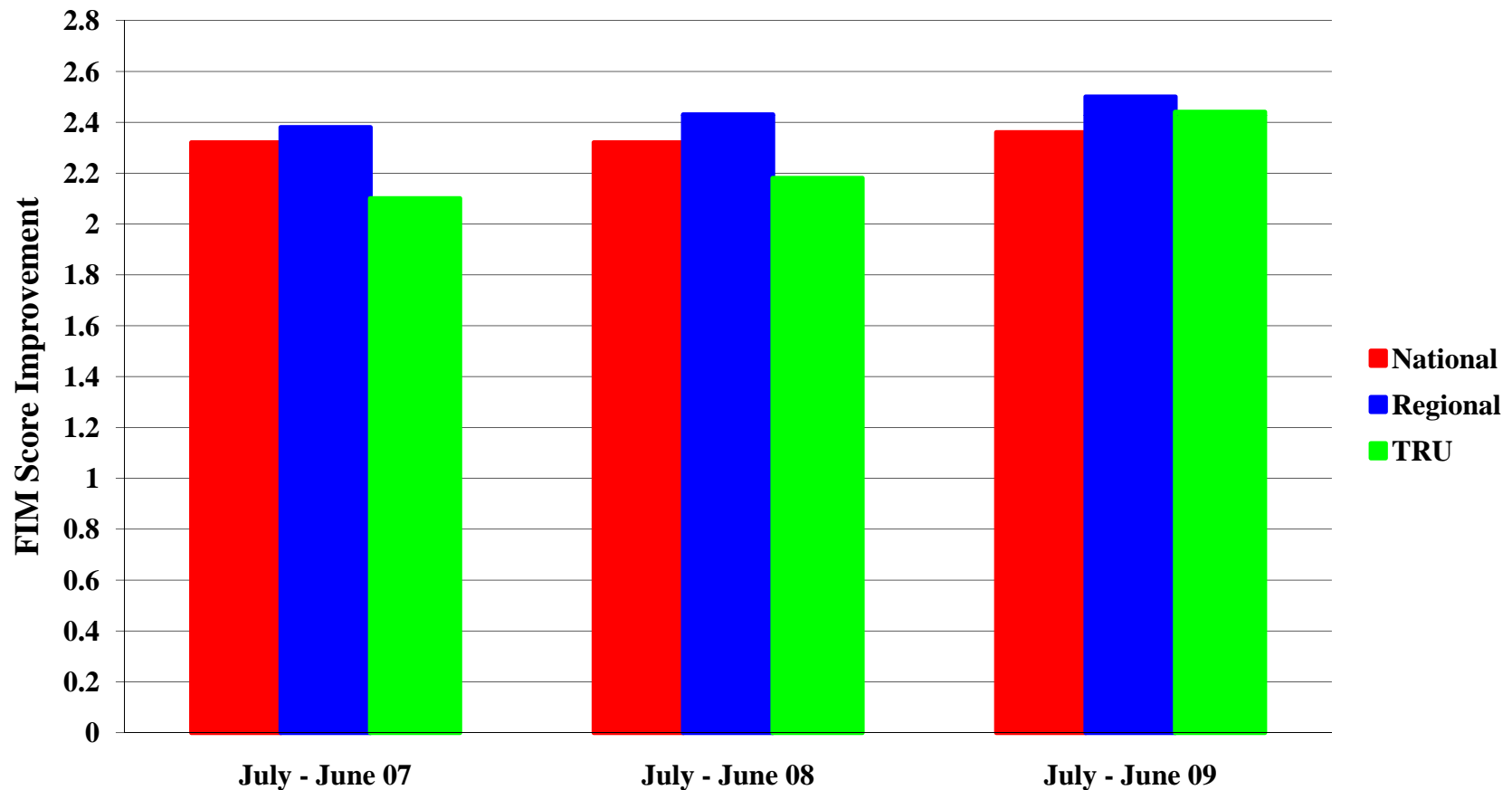
Average Length of Stay (LOS) Sub-acute Rehabilitation

In fiscal year 2009 the sub-acute rehabilitation average length of stay was 20 days. This is 6 days greater than the region and equal to the nation.



Amount of Improvement per Patient Day Acute Rehabilitation

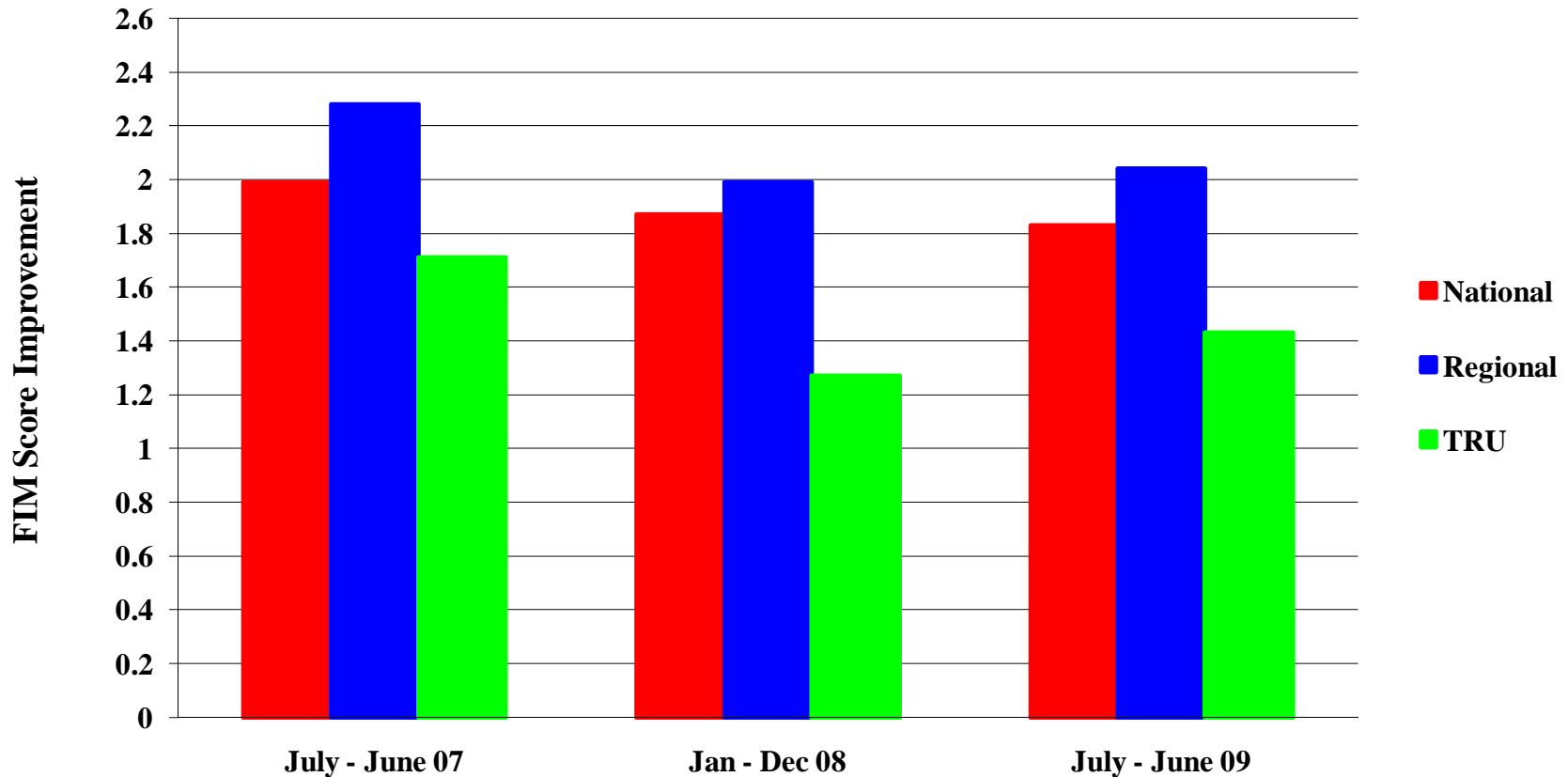
The amount of improvement per day represents the amount of improvement in function (walking, mobility, eating, memory, communication) that is made for each day the patient is on the Terrace Rehabilitation Unit. FIM stands for Functional Independence Measure. This is the scale used to measure a patient's function. Acute rehabilitation improved the last two years and is now greater than the national average and closer to the regional average.



Amount of Improvement per Patient Day

Sub-acute Rehabilitation

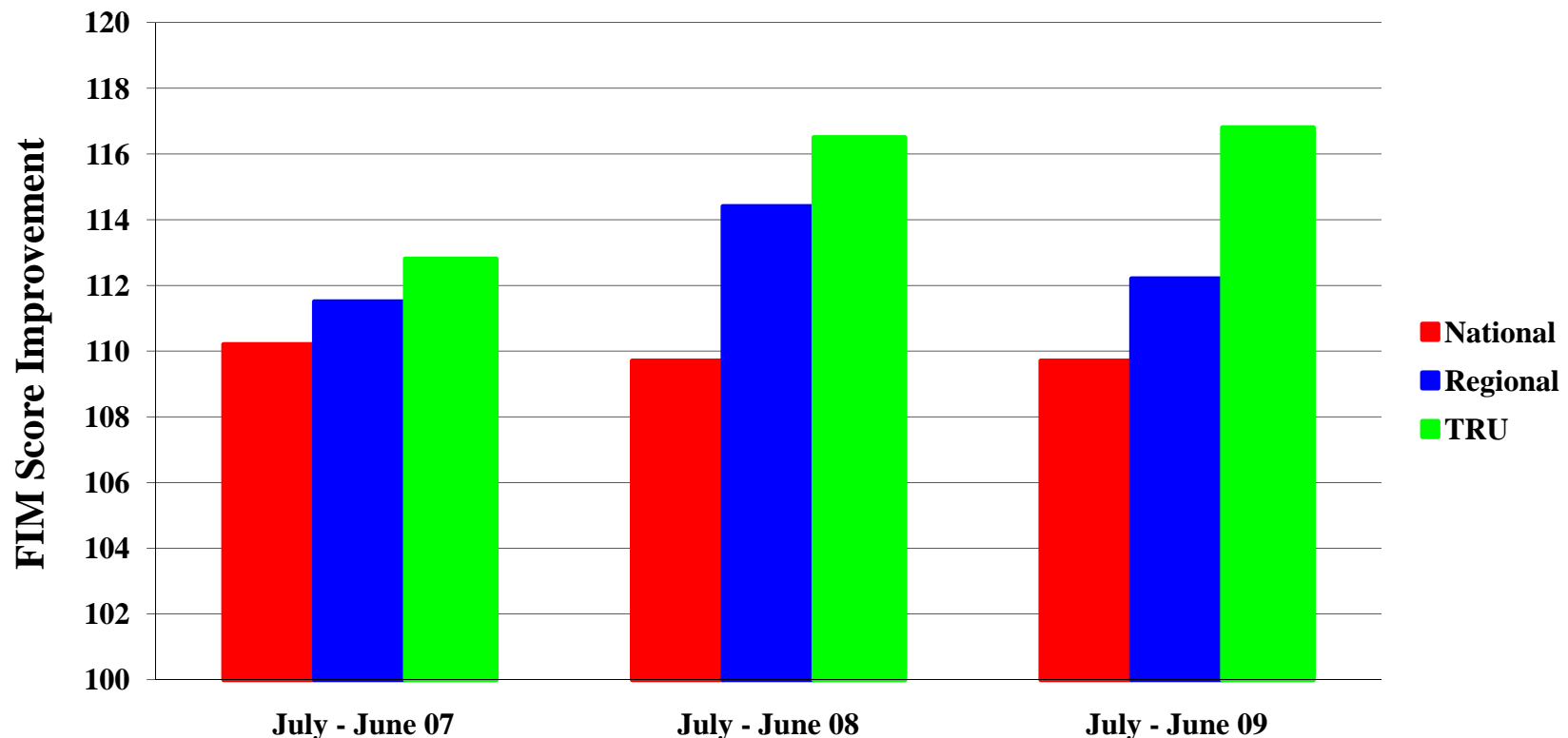
The amount of improvement per day represents the amount of improvement in function (walking, mobility, eating, memory, communication) that is made for each day the patient is on the Terrace Rehabilitation Unit. FIM stands for Functional Independence Measure. This is the scale used to measure a patient's function. In the area of sub-acute rehabilitation the patient improvement per day increased.



How Our Patients Function 90 Days after Discharge - Acute Rehabilitation

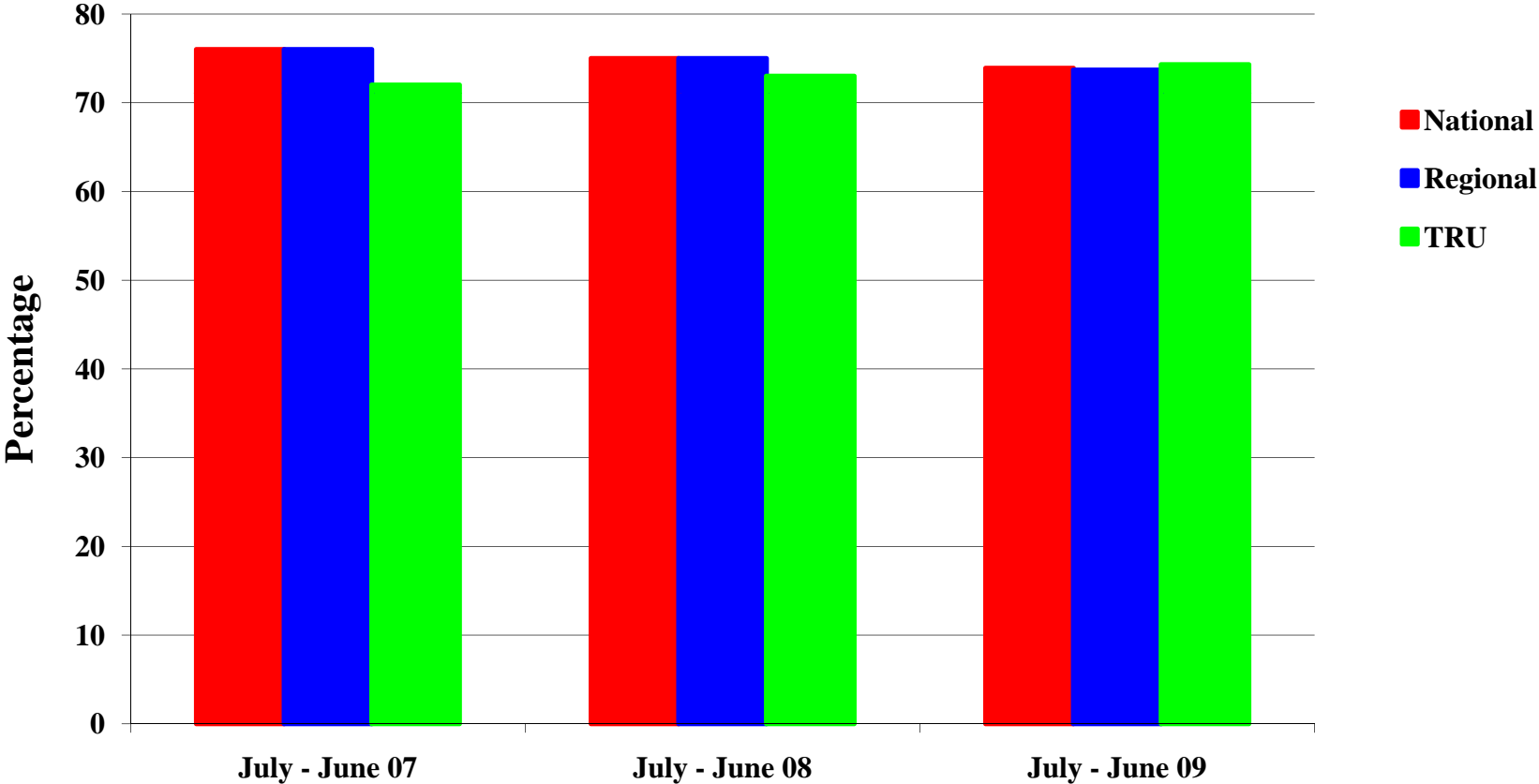
Persons served are contacted by phone at an average of 90 days after discharge. The goal is a gradual increase in overall level of functioning following discharge to a community setting. The persons served at the acute rehabilitation level of care continue to function at a high level following discharge from the Terrace Rehabilitation Unit.

Similar data is not available for the sub-acute level of care due to a change in how data was collected for sub-acute patients in 2009. This is related to a change at the company that calculates the data for the Terrace Rehabilitation Unit. It is anticipated that this data will be available for reporting next year.



Patients Who Went Home or to Assisted Living at Discharge Acute Rehabilitation

This graph displays the percentage of patients that were discharged home or to assisted living from the Terrace Rehabilitation Unit compared to the region and nation. In acute rehabilitation the percentage increased compared to last year and is now slightly above the nation and region.



Patients Who Went Home or to Assisted Living at Discharge Sub-acute Rehabilitation

This graph displays the percentage of patients that were discharged home or to assisted living from the Terrace Rehabilitation Unit compared to the region and nation. In sub-acute rehabilitation the percentage improved and is now closer to similar facilities and the nation.

